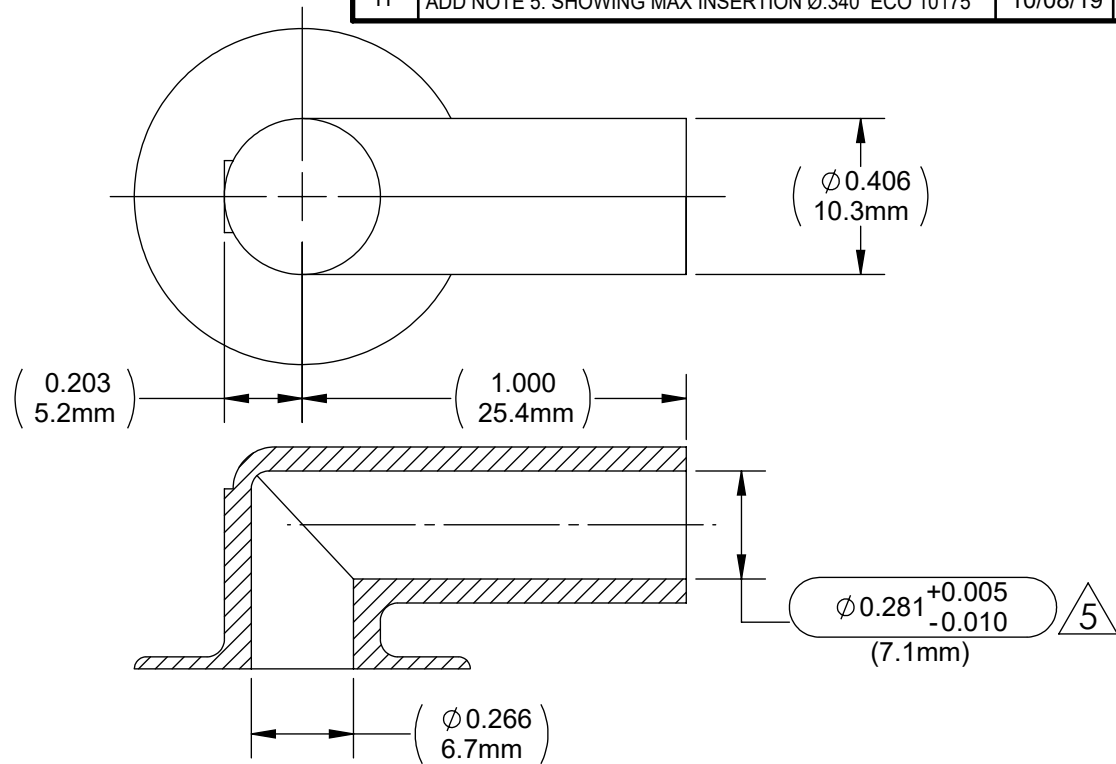
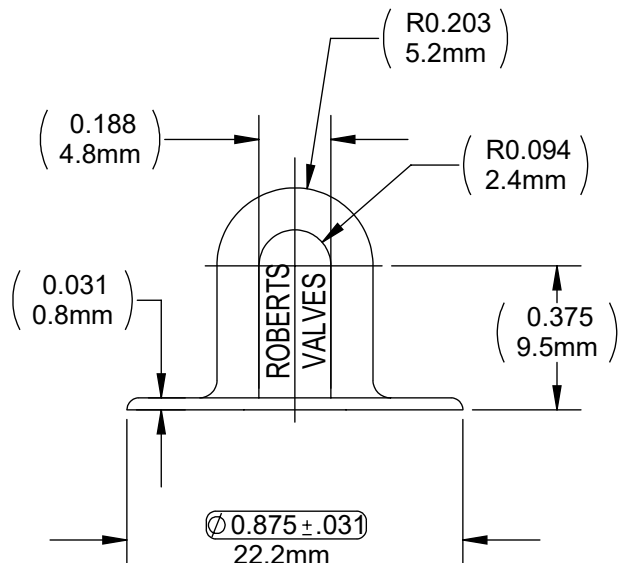


DRAWING NO. C167ACXX	REV H	Customer Drawing	REVISION HISTORY			
			REV	DESCRIPTION (ECO)	DATE	APPROVED
			G	UPDATE NOTES FOR SUFFIX'S ECO 7668	10/02/17	AK
			H	ADD NOTE 5. SHOWING MAX INSERTION Ø.340 ECO 10175	10/08/19	AK



- FIRST SUFFIX "XX" INDICATES MATERIAL & COLOR:
NO SUFFIX - PVC, CLEAR
UBK - POLYURETHANE / PVC, BLACK
UR - POLYURETHANE / PVC, RED
- CRITICAL DIMENSIONS ARE CIRCLED, AND SUBJECT TO INSPECTION.
- DIMENSIONS IN PARENTHESES ARE FOR REFERENCE ONLY.
- ALL DIMENSIONS ARE IN INCHES WITH NOMINAL,
DIMENSIONS IN MILLIMETERS BELOW.

5. MAX DIA. TO BE INSERTED IS Ø.340

QUALITY CRITERIA:


O.D. FLASH: 0.030 MAX. (0.76mm)

GATE VESTIGE: 0.03 MAX. (0.76mm)

EMBEDDED PARTICLES, BUBBLES, SPOTS, STAINS: 1.0mm²
MAX. NO MORE THAN 5 PER PART.

MOLDED PARTS:
GATES, PARTING LINES, AND FLASH PER QUALITY CRITERIA

PROPRIETARY AND CONFIDENTIAL
THE INFORMATION CONTAINED IN THIS DRAWING IS SOLE PROPERTY
OF HALKEY-ROBERTS CORPORATION ST. PETERSBURG, FL. ANY
REPRODUCTION IN PART OR AS A WHOLE WITHOUT THE WRITTEN
PERMISSION OF HALKEY-ROBERTS CORPORATION IS PROHIBITED.

DRAWN BY	M.S	DATE	10-30-97
APPROVED BY	JW	DATE	
MATERIAL			
FINISH			
UNLESS OTHERWISE SPECIFIED:		THIRD ANGLE PROJECTION	
DIMENSIONS ARE IN INCHES			
TOLERANCES:			
ANGULAR: ± 1°			
TWO PLACE DECIMAL ± .01			
THREE PLACE DECIMAL ± .005			

HR® Halkey-Roberts®

ANGLE CONNECTOR

DRAWING NO. C167ACXX

DO NOT SCALE DRAWING

SHEET 1 OF 2